

Fig. S1. Drug survival of other biologics in patients with psoriasis. (a) "n" at risk at baseline: 196. (b) "n" at risk at baseline: 175 for ustekinumab, 237 for adalimumab, 262 for etanercept, and 23 for infliximab.

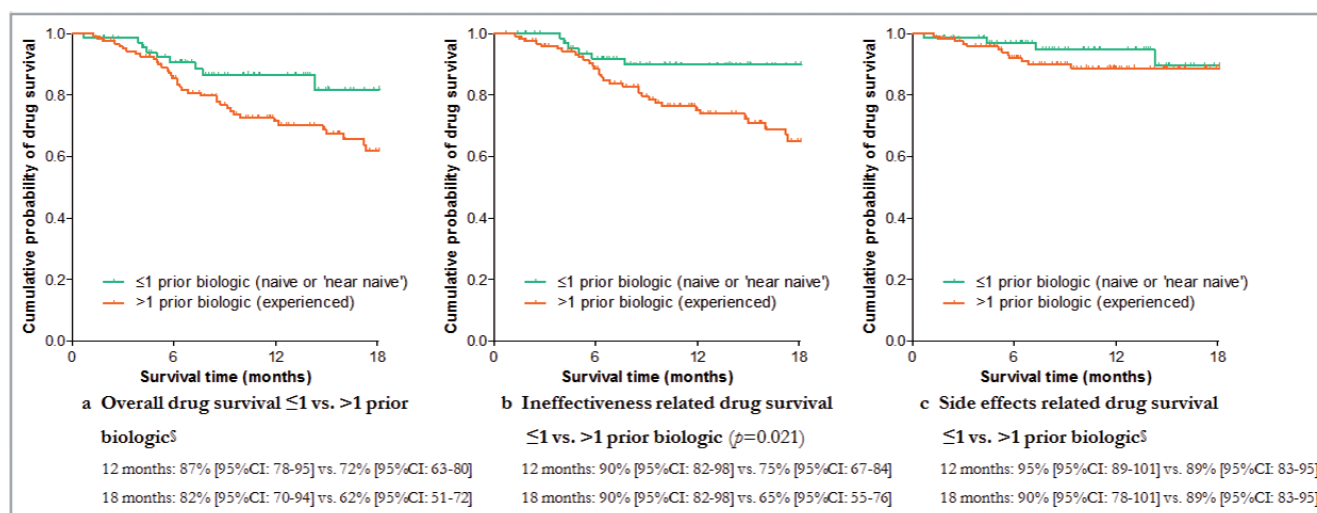


Fig. S2. Drug survival of secukinumab for patients with ≤ 1 ($n = 71$) vs. > 1 ($n = 125$) prior biologic, split for reason of discontinuation. (a-c) "n" at risk* for naive or near-naive patients: 71 at baseline, 53 at 6 months, 26 at 12 months and 7 at 18 months. "n" at risk* for experienced patients: 125 at baseline, 93 at 6 months, 57 at 12 months, and 26 at 18 months. [§]No log-rank test performed due to crossing of curves.

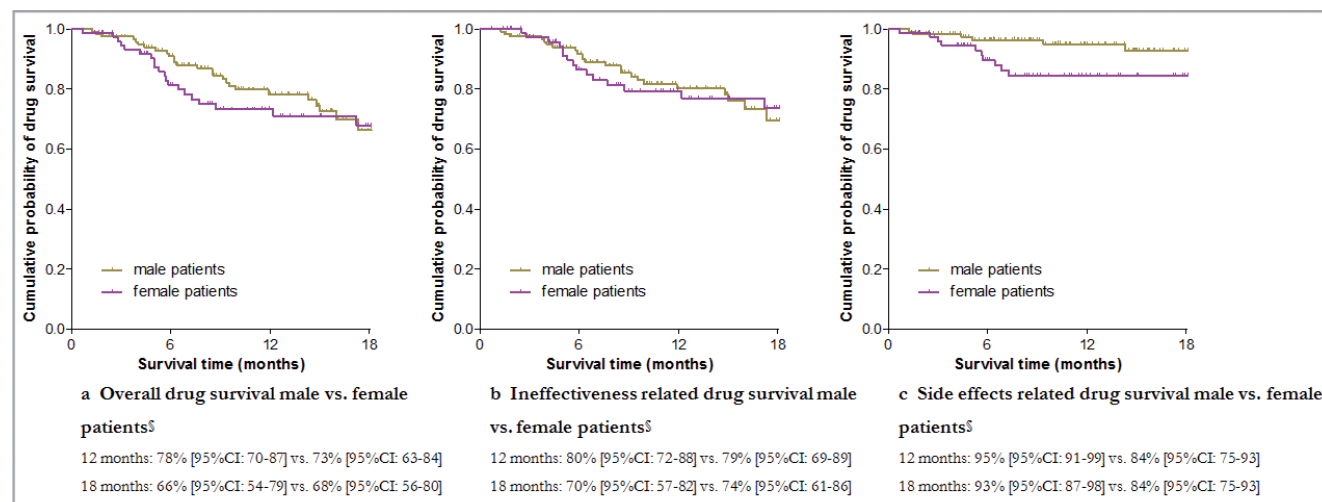


Fig. S3. Drug survival of secukinumab for male ($n = 119$) vs. female ($n = 77$) patients, split for reason of discontinuation. (a-c) "n" at risk* for male patients: 119 at baseline, 93 at 6 months, 51 at 12 months, and 14 at 18 months. "n" at risk* for female patients: 77 at baseline, 53 at 6 months, 32 at 12 months, and 19 at 18 months. [§]No log-rank test performed due to crossing of curves.

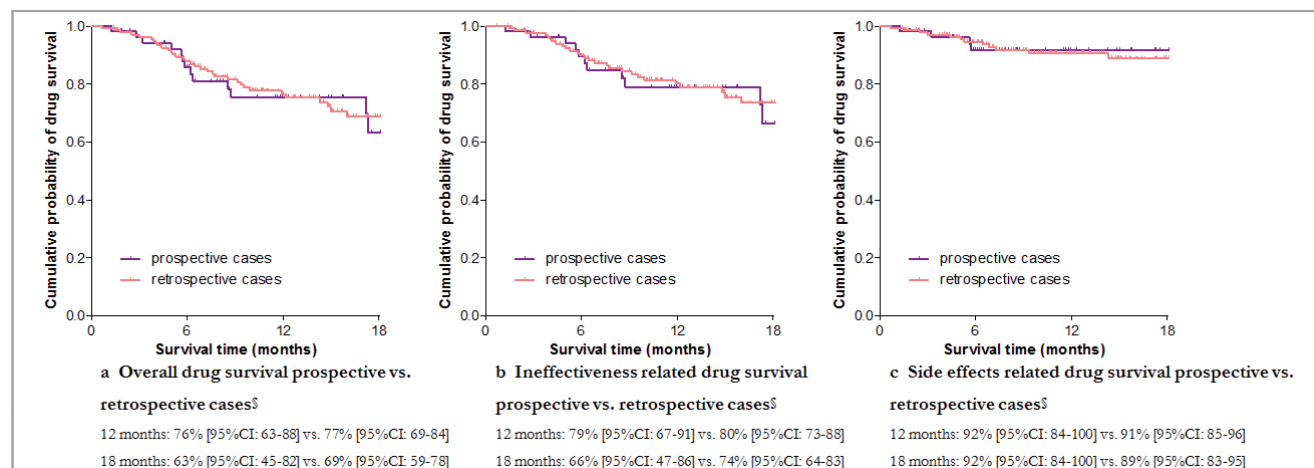


Fig. S4. Drug survival of secukinumab for prospective (n = 55) vs. retrospective (n = 141) cases, split for reason of discontinuation. (a-c) "n" at risk* for prospective cases: 55 at baseline, 38 at 6 months, 21 at 12 months, and 9 at 18 months. "n" at risk* for retrospective cases: 141 at baseline, 108 at 6 months, 62 at 12 months, and 24 at 18 months. [§]No log-rank test performed due to crossing of curves.

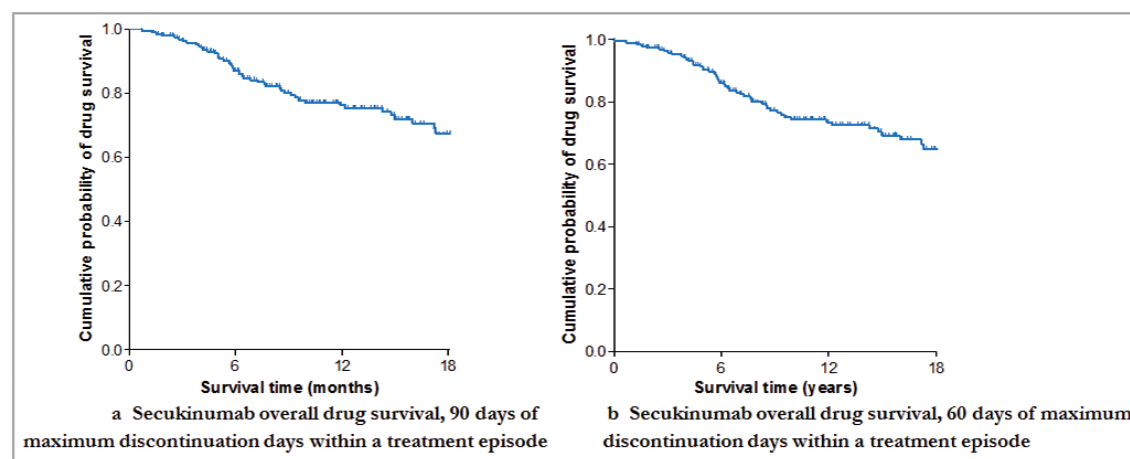


Fig. S5. Drug survival of secukinumab in patients with psoriasis, comparison of different threshold for maximum discontinuation periods within treatment episodes. (a and b) "n" at risk at baseline: 196.