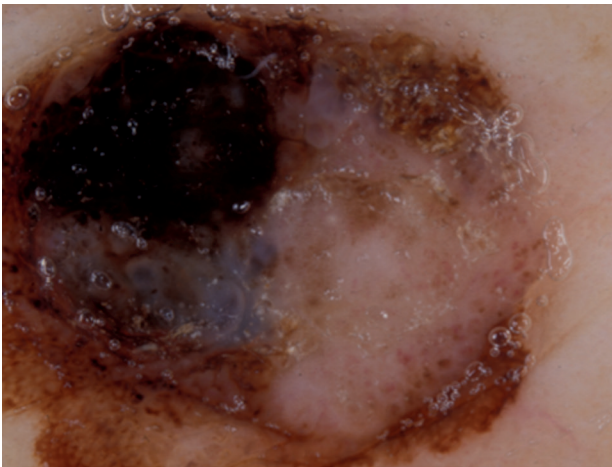


## How is Your Skill to Diagnose a Skin Lesion by Dermoscopy?

KAARE WEISMANN, PROFESSOR, DR.MED.  
E-mail: [weisech@dadlnet.dk](mailto:weisech@dadlnet.dk)

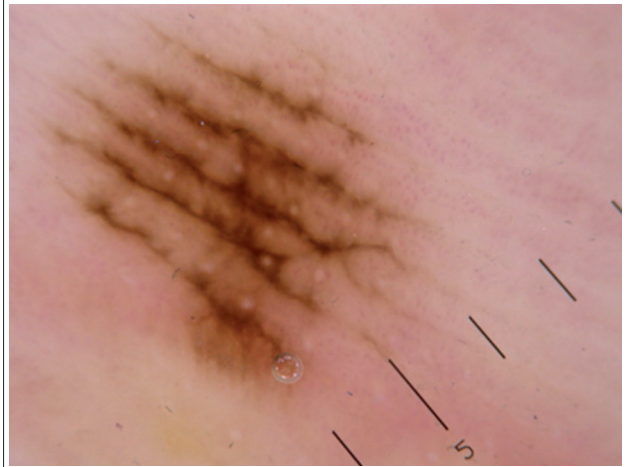
Case 1. A 60-year-old woman with a nodule on her left thigh



What is your diagnosis?

1. Nodular melanoma
2. Seborrhoeic keratosis
3. Basal cell carcinoma

Case 2: A young woman with a brown patch on her left palm



What is your diagnosis?

1. Lentigo maligna
2. Cutaneous bleeding
3. Melanocytic naevus

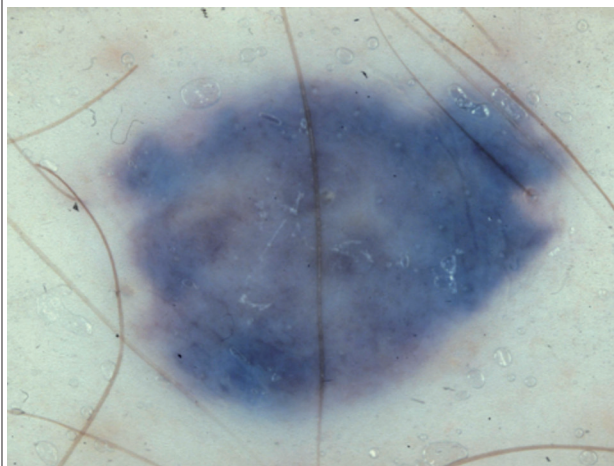
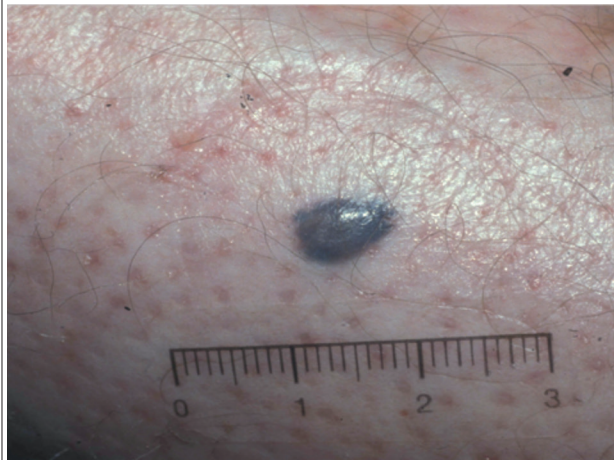
Case 3: A young woman with a black lesion on her lower back



**What is your diagnosis?**

- 1. Malignant melanoma
- 2. Melanocytic naevus
- 3. Seborrhoeic keratosis

Case 4: An elderly man with a nodule on his left leg



**What is your diagnosis?**

- 1. Nodular melanoma
- 2. Blue naevus
- 3. Dermatofibroma

*Find the answers on bottom of page 113.*