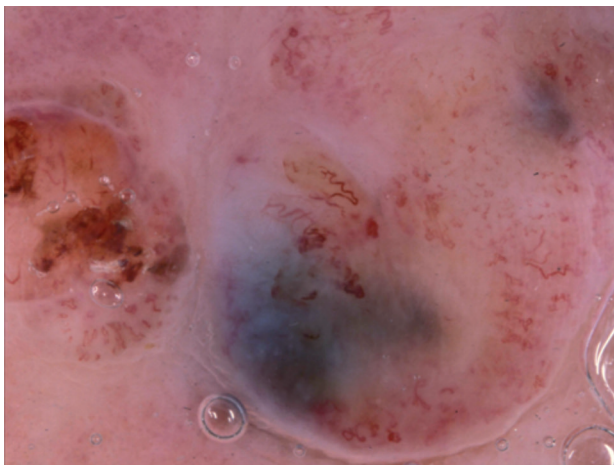


## How is Your Skill to Diagnose a Skin Lesion by Dermoscopy?

KAARE WEISMANN, PROFESSOR, DR.MED.

E-mail: [weisech@dadlnet.dk](mailto:weisech@dadlnet.dk)

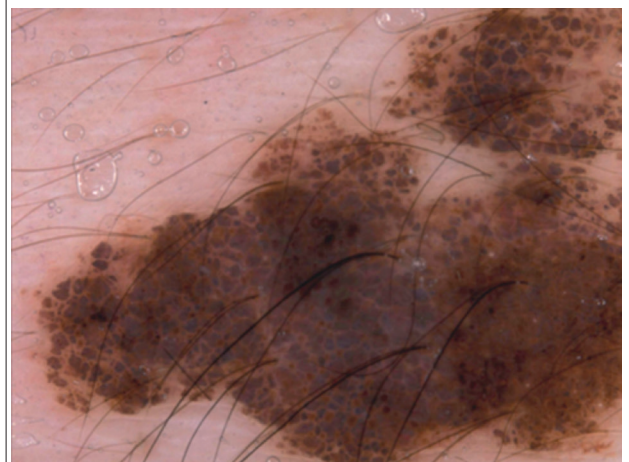
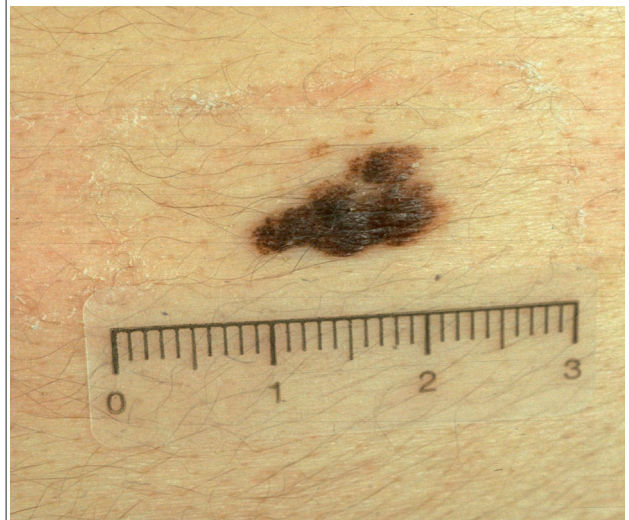
Case 25: A 82-year-old man with a nodular lesion on his left leg



**What is your diagnosis?**

1. Nodular melanoma
2. Basal cell carcinoma
3. Squamous cell carcinoma

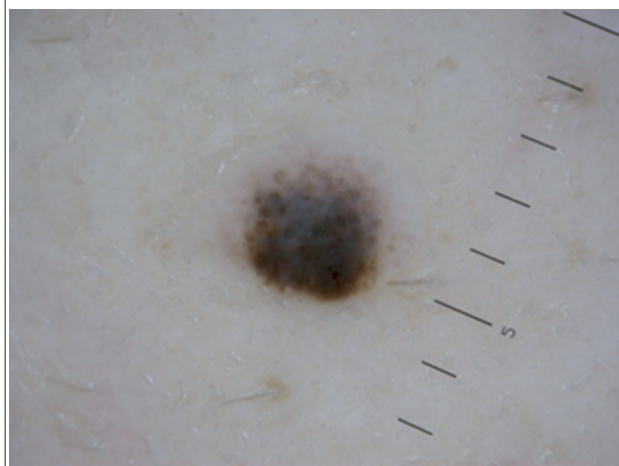
Case 26: A 36-year-old man with a black element on his left shoulder



**What is your diagnosis?**

1. Malignant melanoma
2. Seborrheic keratosis
3. Compound naevus

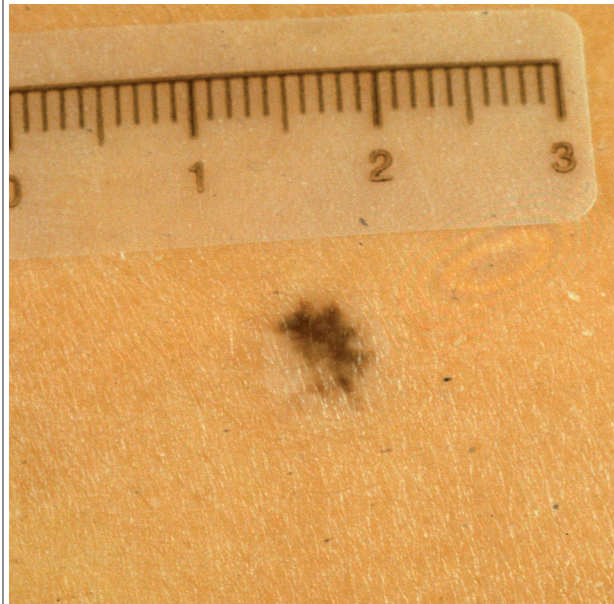
Case 27: A 18-year-old woman with a newly developed dark spot on her left shin



**What is your diagnosis?**

1. Halo naevus
2. Malignant melanoma *in situ*
3. Common naevus

Case 28: A 30-year-old woman with an irregular dark brown lesion on her chest



**What is your diagnosis?**

1. Malignant melanoma
2. Recurrent naevus
3. Halo naevus

**Find the answers on page 144.**