

Table SI. Summary of psoriatic patient characteristics

Patients	Sex	Age, years	Localization	PASI score	Local severity	Local PASI	Duration time (years)	DLQI
PsV-SGP (<i>n</i> = 6)								
PsV-SGP1	F	59	Forearm	13.3	9	18	4	N/A
PsV-SGP2	M	57	Shin	13	9	18	19	N/A
PsV-SGP3	M	46	Forearm	17.6	8	24	28	7
PsV-SGP4	M	28	Shin	10.6	8	16	7	8
PsV-SGP5	M	52	Forearm, crook of the arm	38.4	11	33	32	29
PsV-SGP6	M	34	Forearm, crook of the arm	27.6	10	40	27	23
Mean ± SD		46.0 ± 12.6		20.1 ± 10.8	9.2 ± 1.2	24.8 ± 9.7	19.5 ± 11.7	16.7 ± 10.9
Scalp Ps (<i>n</i> = 6)								
Scalp Ps1	F	59	Scalp	13.3	8	16	4	N/A
Scalp Ps2	F	35	Scalp	11	9	18	10	17
Scalp Ps3	M	62	Scalp	13.4	6	12	12	18
Scalp Ps4	M	52	Scalp	38.4	10	30	32	N/A
Scalp Ps5	F	54	Scalp	25.8	10	30	35	13
Scalp Ps6	M	36	Scalp	13.1	6	12	14	N/A
Mean ± SD		49.7 ± 11.5		19.2 ± 10.8	8.2 ± 1.8	19.7 ± 8.3	17.8 ± 12.6	16.0 ± 2.6

Scoring of psoriasis skin was performed according to the severity of the disease. All patients were moderate to severe.

PsV: psoriasis vulgaris; SGP: sebaceous gland poor; Ps: psoriasis; SD: standard deviation; PASI: Psoriasis Area Severity Index; DLQI: Dermatology Life Quality Index.

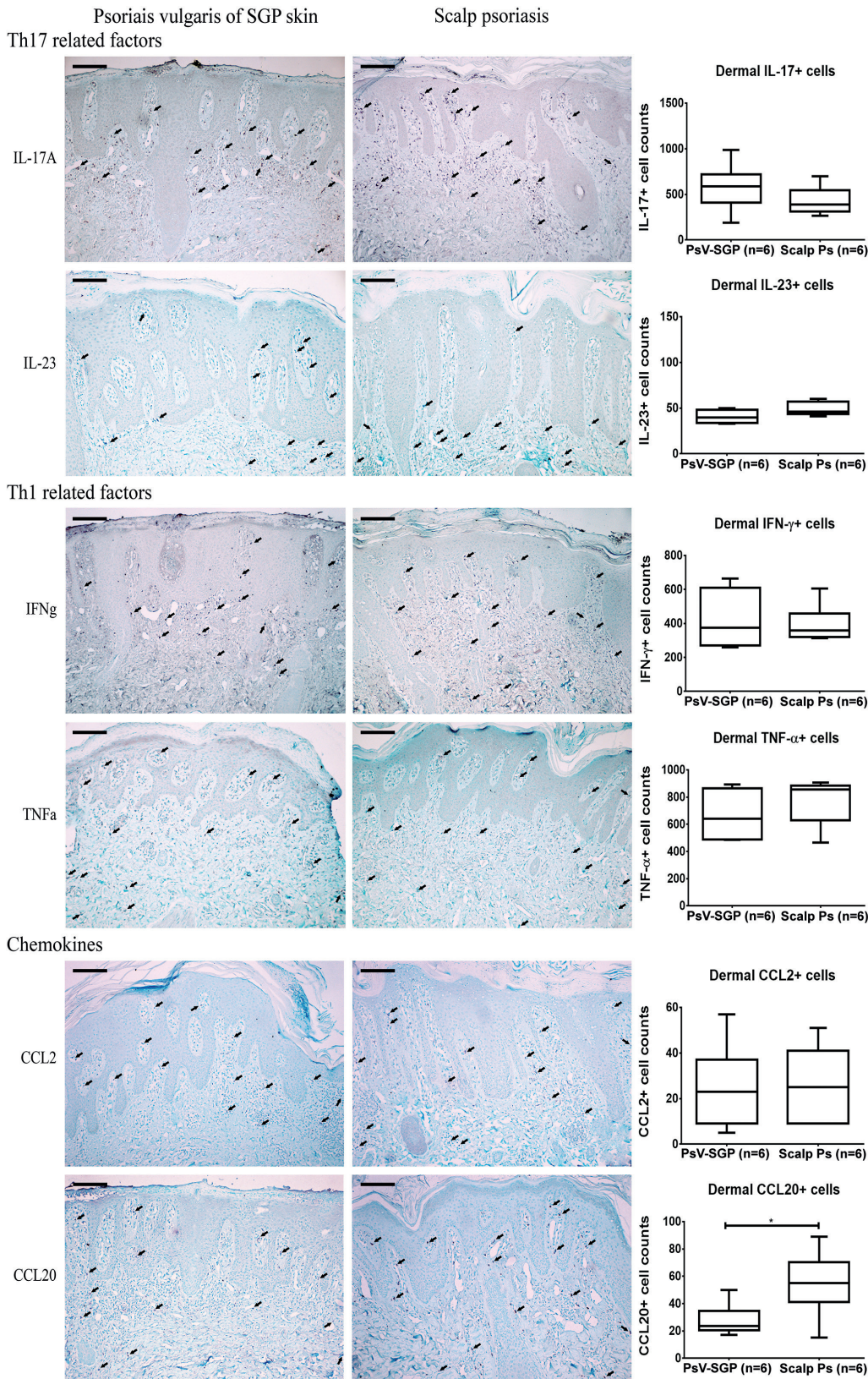


Fig. S2. Immunostaining and quantification of characteristic cytokines related to different Th subsets and Th17-related chemokines in psoriasis vulgaris of sebaceous gland poor (SGP) skin and scalp psoriasis samples (representative images). Regarding all the investigated molecules, 6 samples were examined in both groups. Cell counts were blindly analysed by Panoramic Viewer software. Size bars=50 μ m. Arrows indicate the positive cells. The mean and the corresponding 95% upper and lower confidence intervals, as well as maximum and minimum values of protein levels, are represented by the graphs. (* $p < 0.05$; as determined by independent t-test) CCL: chemokine (C-C motif) ligand; IFN- γ : interferon gamma; IL: interleukin; Ps: psoriasis; TNF: tumour necrosis factor.

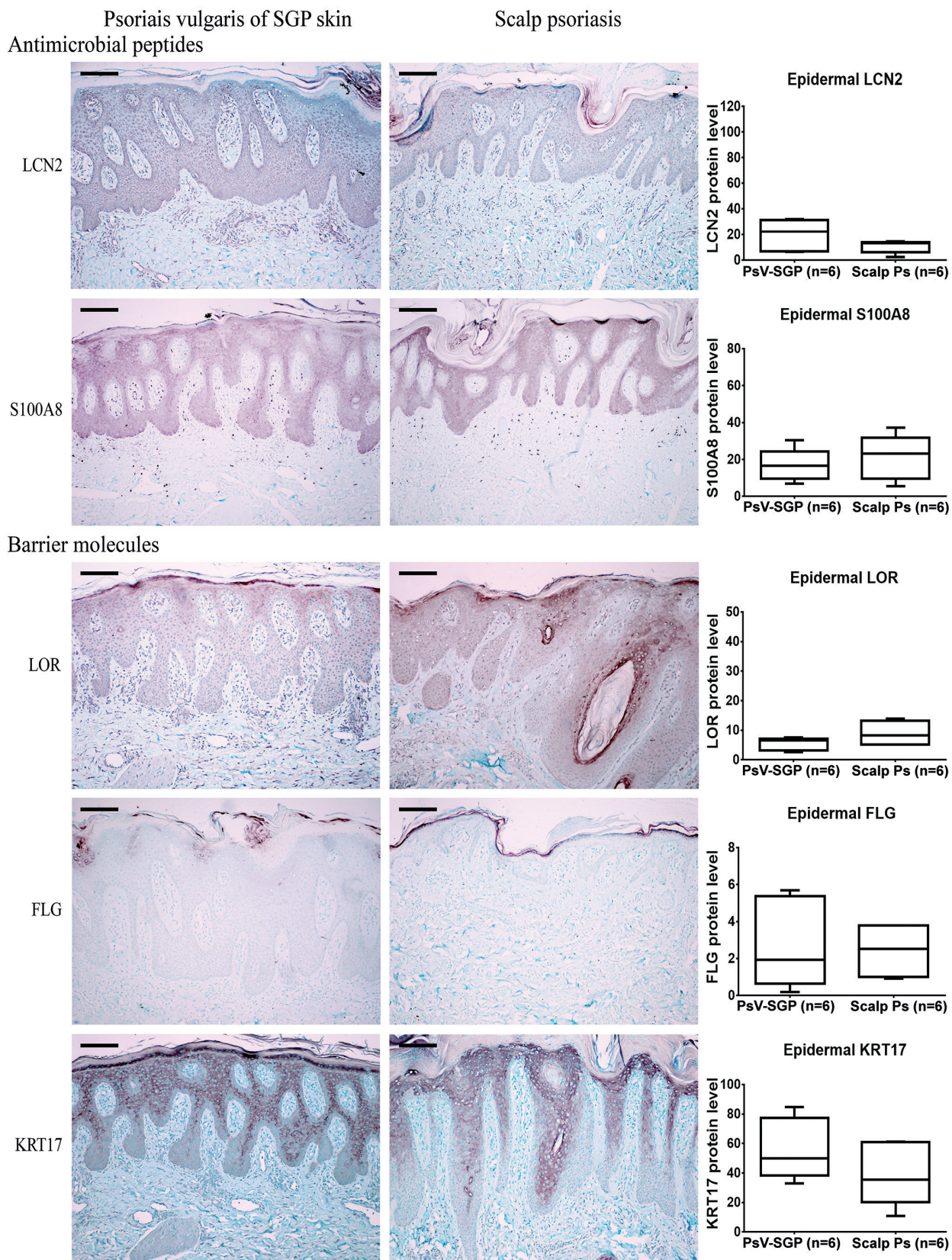


Fig. S3. Immunostaining and quantification of Th17-related AMPs and barrier molecules in psoriasis vulgaris of sebaceous gland poor (SGP) skin and scalp psoriasis samples (representative images). Regarding all the investigated molecules, 6 samples were examined in each group. Cell counts were blindly analysed by Panoramic Viewer software. Size bars=50 µm. The mean and the corresponding 95% upper and lower confidence intervals, as well as maximum and minimum values of protein levels, are represented by the graphs. AMP: antimicrobial peptide; FLG: filaggrin; KRT: keratin; LCN: lipocalin; LOR: loricrin; Ps: psoriasis.