

SHORT COMMUNICATION

A Case of Linear IgA/IgG Bullous Dermatitis with Anti-laminin-332 Autoantibodies

Satoshi Izaki¹, Juniku Mitsuya^{1*}, Tomoyoshi Okada¹, Hiroshi Koga², Takashi Hashimoto² and Tadashi Terui¹¹Division of Dermatological Science, Department of Dermatology, Nihon University School of Medicine, 30-1 Oyaguchi-Kamicho, Itabashi-ku, Tokyo 173-8610, and ²Department of Dermatology, Kurume University School of Medicine, and Kurume University Institute of Cutaneous Cell Biology, Kurume, Fukuoka, Japan. *E-mail: mitsuya.juniku@nihon-u.ac.jp
Accepted Jun 30, 2014; Epub ahead of print Jun 30, 2014

Linear IgA bullous dermatosis (LABD) is characterised by linear deposition of IgA along basement membrane zone (BMZ) in direct immunofluorescence (IF) (1). The term of linear IgA/IgG bullous dermatosis (LAGBD) was proposed for some cases, which showed IgA and IgG deposition to BMZ (2).

In LABD, indirect IF of 1 M NaCl-split normal human skin shows 3 distinct patterns (IgA reactivity on the epidermal side, on the dermal side and on both sides) called lamina lucida, sublamina densa and mirror image types, respectively (3).

In the lamina lucida type LABD, the most common antigen is LAD-1, the 120-kDa/97-kDa extracellular domain of BP180 (4). Autoantigens for sublamina densa type LABD have not been fully investigated. In the previously reported cases, 2 cases reacted with type VII collagen (5, 6), and 1 case reacted with laminin γ 1 (7). However, no IgA autoantibodies to laminin-332 have been reported.

Here we present a rare case of LAGBD, in which IgA and IgG autoantibodies reacted with the dermal side in indirect IF and with laminin-332 in immunoblotting. To the best of our knowledge, this is the first report of LAGBD with anti-laminin-332 autoantibodies.

CASE REPORT

A 53-year-old Japanese man visited us in September 2011, complaining of a 2-month history of skin lesions. Physical examination revealed generalised erythematous skin lesions with tense bullae and erosions, as well as pustules, crusts, and scales (Fig. 1a, b). Some of these skin lesions formed an annular

pattern 2–6 cm in diameter (Fig. 1c). Mucous membranes were not involved. Histopathology of the skin biopsy specimen taken from the bullae on the left upper arm showed a subepidermal blister with numerous neutrophils and a few eosinophils.

Direct IF for IgG, IgA, IgM and C3 was performed on perilesional skin biopsy specimens. Indirect IF was performed on normal human skin and 1 M NaCl-split normal skin as described previously (8). Direct IF for the skin biopsy revealed a linear BMZ deposition of IgG and IgA, and C3. Indirect IF demonstrated anti-BMZ autoantibodies of IgG class (titre 1:40), but not IgA class (data not shown). Indirect IF of 1 M NaCl-split skin detected IgG reactivity with dermal side (titre 1:10), while no IgA reactivity was found.

Immunoblot analyses were performed using epidermal and dermal extracts from normal human skin, recombinant proteins of NC16A- and C-terminal domains of BP180, and purified human laminin-332, as well as concentrated HaCaT cell culture supernatant, which contains the 120-kDa LAD-1, soluble ectodomain of BP180. Immunoblot analysis showed exclusive IgA and IgG reactivity with the 165-kDa and 145-kDa forms of α 3 subunit and the 105-kDa γ 2 subunit of laminin-332 (Fig. S1¹). The titre of our patient was much lower than that of control serum from anti-laminin 332 mucous membrane pemphigoid (MMP) patient. There was no reactivity in other immunoblot analyses.

Based on these observations, we diagnosed the patient as LAGBD with anti-laminin-332 autoantibodies. The patient was initially treated with combination of doxycycline hydrochloride (200 mg/day) and nicotinamide (900 mg/day) without sufficient improvement. When dapsone (75 mg/day) was added on day 7, the skin lesions improved quickly within a few days leaving milia formation. This treatment was continued without recurrence.

About one and half years later, no circulating IgA and IgG autoantibodies were detected by indirect IF of 1 M NaCl-split

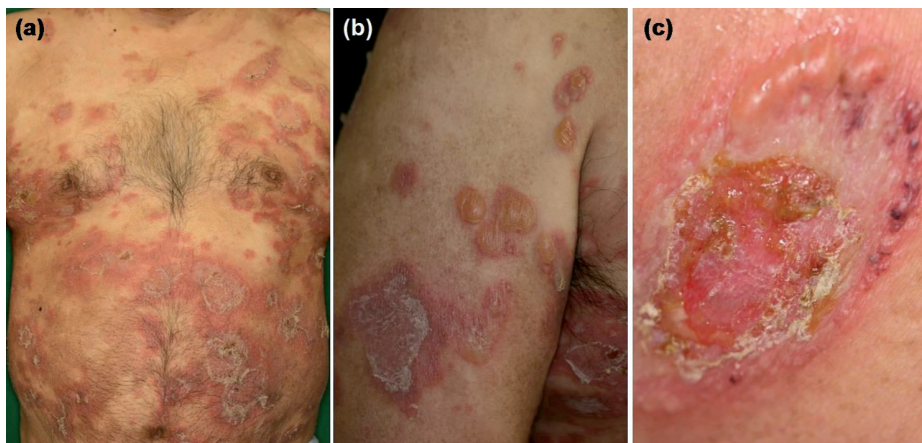
¹<http://www.medicaljournals.se/acta/content/?doi=10.2340/00015555-1923>

Fig. 1. Multiple annular erythemas with vesicles, bullae and scales were seen on the trunk (a) and extremities (b). Vesicles and bullae appeared in an annular arrangement (c).

skin, and IgA and IgG reactivity with laminin-332 in immunoblotting disappeared.

DISCUSSION

Our patient without mucosal involvement should be differentiated from IgA type anti-laminin-332 MMP, only 3 cases of which have been reported thus far (9–11). Two cases had severe mucous membrane involvement and were refractory to treatments (9, 10), while another case had only ocular lesion (11).

Our patient showed clinically papules, scales, and bullae on annular erythemas, and histopathologically subepidermal bulla with numerous neutrophils. In addition, he improved quickly after treatment with dapsone. Therefore, we diagnosed this case as LAGBD with anti-laminin-332 autoantibodies.

Two cases of sublamina densa-type LABD were reported to show IgA autoantibodies to the 290-kDa type VII collagen, which may be diagnosed as IgA-type epidermolysis bullosa acquisita (EBA) (5, 6). However, the clinical and histopathological features in these 2 cases were considerably different from those of EBA. Therefore, although IgG autoantibodies in EBA patients react mainly with NC1 domain of type VII collagen, IgA autoantibodies in the 2 LABD cases might react with different epitope on type VII collagen (5, 6). Likewise, epitope on laminin-332 for IgA autoantibodies in our patient may differ from that of anti-laminin-332 MMP.

Laminin-332 is located to the dermal side by indirect IF of 1 M NaCl-split skin (12). Based on the traditional classification, our case is regarded as a 'sublamina densa type' of LAGBD. However, this denomination is not appropriate because laminin-332 is found at the lamina lucida-lamina densa interface (12). Thus, we would like to propose an alternative denomination, 'sublamina lucida type'.

Abnormal IgA-antigen complexes in tissues induce the release of leukotriene B4 through cross-linking of Fc α RI. This induces sustained recruitment, constant activation and infiltration of granulocytes, which cause severe tissue damage and aggravation of the symptoms of IgA autoantibody-mediated autoimmune diseases (13).

The pathogenesis of IgG autoantibodies has not been fully discussed in LAGBD reports thus far. In one report, passive transfer of IgG anti-laminin 332 autoantibodies to neonatal mice induced blisters (14). In our case, neither circulating IgA nor IgG autoantibodies were detected after clinical symptoms disappeared following treatments with dapsone. These observations suggest that not only IgA autoantibodies but also IgG autoantibodies are pathogenic.

Dapsone may bind to IgA directly and inhibits the adherence of neutrophils to anti-BMZ antibodies (15).

However, it is unclear whether dapsone leads to disappearance of circulating IgG and IgA autoantibodies.

REFERENCES

1. Chorzelski TP, Beutner EH, Jablonska S, Blaszczyk M, Triftshausen C. Immunofluorescence studies in the diagnosis of dermatitis herpetiformis and its differentiation from bullous pemphigoid. *J Invest Dermatol* 1971; 56: 373–380.
2. Zane JJ, Pazderka Smith E, Powell D, Taylor TB, Smith JB, Meyer LJ. Antigenic specificity of antibodies from patients with linear basement membrane deposition of IgA. *Dermatology* 1994; 189: 64–66.
3. Yamasaki Y, Hashimoto T, Nishikawa T. Dermatitis herpetiformis with linear IgA deposition: ultrastructural localization of in vivo bound IgA. *Acta Derm Venereol* 1982; 62: 401–405.
4. Zane JJ, Taylor TB, Meyer LJ, Petersen MJ. The 97 kDa linear IgA bullous disease antigen is identical to a portion of the extracellular domain of the 180 kDa bullous pemphigoid antigen, BPAg2. *J Invest Dermatol* 1998; 110: 207–210.
5. Wakelin SH, Allen J, Zhou S, Wojnarowska F. Drug-induced linear IgA disease with antibodies to collagen VII. *Br J Dermatol* 1998; 138: 310–314.
6. Hashimoto T, Ishiko A, Shimizu H, Tanaka T, Dodd HJ, Bhogal BS, et al. A case of linear IgA bullous dermatosis with IgA anti-type VII collagen autoantibodies. *Br J Dermatol* 1996; 134: 336–339.
7. Wozniak K, Hashimoto T, Fukuda S, Ohyama B, Ishii N, Koga H, et al. IgA anti-p200 pemphigoid. *Arch Dermatol* 2011; 147: 1306–1310.
8. Gammon WR, Briggaman RA, Inman AO 3rd, Queen LL, Wheeler CE. Differentiating anti-lamina lucida and anti-sublamina densa anti-BMZ antibodies by indirect immunofluorescence on 1.0 M sodium chloride-separated skin. *J Invest Dermatol* 1984; 82: 139–144.
9. Hayashi I, Shinkuma S, Shimizu S, Natsuga K, Ujiie H, Yasui C, et al. Mucous membrane pemphigoid with generalized blisters: IgA and IgG autoantibodies target both laminin-332 and type XVII collagen. *Br J Dermatol* 2012; 166: 1116–1120.
10. Natsuga K, Nishie W, Shinkuma S, Moriuchi R, Shibata M, Nishimura M, et al. Circulating IgA and IgE autoantibodies in antilaminin-332 mucous membrane pemphigoid. *Br J Dermatol* 2010; 162: 513–517.
11. Coronella G, Amato L, Berti S, Moretti S, Terracina M, Mastrogiacomo A, et al. Ocular 'nonscarring' mucous membrane pemphigoid associated with antilaminin-5 antibodies. *Clin Exp Dermatol* 2005; 30: 679–681.
12. Domloge-Hultsch N, Anhalt GJ, Gammon WR, Lazarova Z, Briggaman R, Welch M, et al. Antiepiligrin cicatricial pemphigoid. A subepithelial bullous disorder. *Arch Dermatol* 1994; 130: 1521–1529.
13. van der Steen LP, Bakema JE, Sesarman A, Florea F, Tuk CW, Kirtschig G, et al. Blocking Fc α receptor I on granulocytes prevents tissue damage induced by IgA autoantibodies. *J Immunol* 2012; 189: 1594–1601.
14. Lazarova Z, Yee C, Darling T, Briggaman RA, Yancey KB. Passive transfer of anti-laminin 5 antibodies induces subepidermal blisters in neonatal mice. *J Clin Invest* 1996; 98: 1509–1518.
15. Thuong-Nguyen V, Kadunce DP, Hendrix JD, Gammon WR, Zane JJ. Inhibition of neutrophil adherence to antibody by dapsone: a possible therapeutic mechanism of dapsone in the treatment of IgA dermatosis. *J Invest Dermatol* 1993; 100: 349–355.